

Anritsu DualX X-Ray Inspection System

Reliable Contaminant Detection for Poultry and Meat Products

Date	Thursday, 26 August 2021 Wednesday, 8 September 2021
Time	11:00AM – 12:00PM (GMT+8 – SG / MY Time) 10:00AM – 11:00AM (GMT+7 – JKT time)
Venue	Via ZOOM
Speaker	Evin Chong <i>Cairnhill Metrology Sdn Bhd (Food, Pharma Industrial Solutions Team)</i>
Topics	<ul style="list-style-type: none">• Introduction of Anritsu DualX X-Ray Inspection System• Single Energy vs Dual Energy X-Ray• Features and Advantages of Dual Energy X-Ray<ul style="list-style-type: none">✓ Reliable detection of thin, low-density bones✓ High sensitivity detection of products with uneven surfaces✓ False detection can be prevented in bulk flow inspection• Live Demonstration
Attendees	Poultry and Meat Manufacturers
Program includes	Digital handouts (To be emailed post event.)

Can you reliably detect thin and/or low-density
BONES in poultry and meat products?

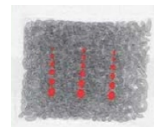
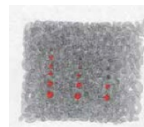
Conventional



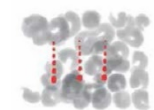
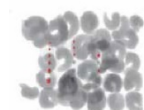
DualX



Can you effectively detect contaminants for products
with **UNEVEN** and/or **ROUGH** surfaces?



Can you prevent false detection in bulk flow
inspection (**OVERLAPS**)?



Join us to know more about the solutions for the above common issues faced by customers!

* Registration will end by 3 September 2021. Please fill in your details [here](#).

Anritsu DualX X-Ray Inspection System

Reliable Contaminant Detection for Poultry and Meat Products

Broiler chickens selectively bred for rapid growth tend to have relatively less bone mass to the thickness of the meat. With the advanced Dual energy sensor technology, Anritsu DualX X-Ray Inspection System performs reliable and consistent inspection of poultry products.

The DualX X-Ray Inspection System can reliably detect as low as 2mm or smaller poultry bones including pulley, fan and scapula as well as low density contaminants in products where bone, stone, ceramic, glass and even wire might enter the process.

Cairnhill Metrology invites you to our webinar where we will share how the DualX is capable of helping poultry processors achieve higher line efficiencies while focusing on ROI, TCO and OEE by identifying low-density contaminants including metal and non-metal contaminants.

Our demo systems are also available for live demonstrations by appointment if you wish to see them in person at our Metrology Applications Centres in Singapore, Malaysia and Indonesia.

